

55/91

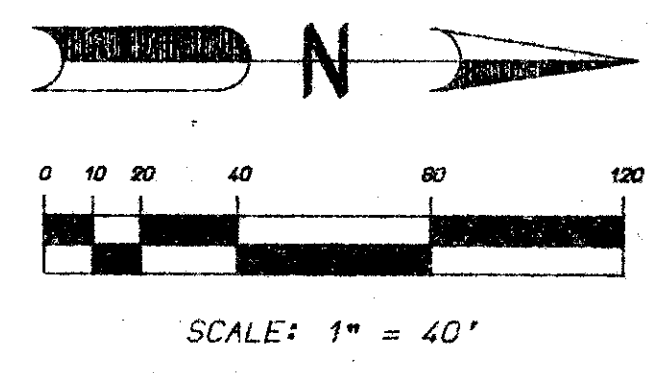
LAKES OF DELRAY

BEING A PORTION OF THE NORTHWEST ONE - QUARTER OF SECTION 23, TOWNSHIP 46 SOUTH, RANGE 42 EAST
PALM BEACH COUNTY, FLORIDA

FEBRUARY, 1986
SHEET 2 OF 2 SHEETS

91

23/46/42
 SUBDIVISION * Lakes of Delray
 BOOK 55 PAGE 91
 FLOOD ZONE 0
 ROAD # 37
 SE
 PUB. MAP # 2208
 ZONING
 ZONING CODE 3345

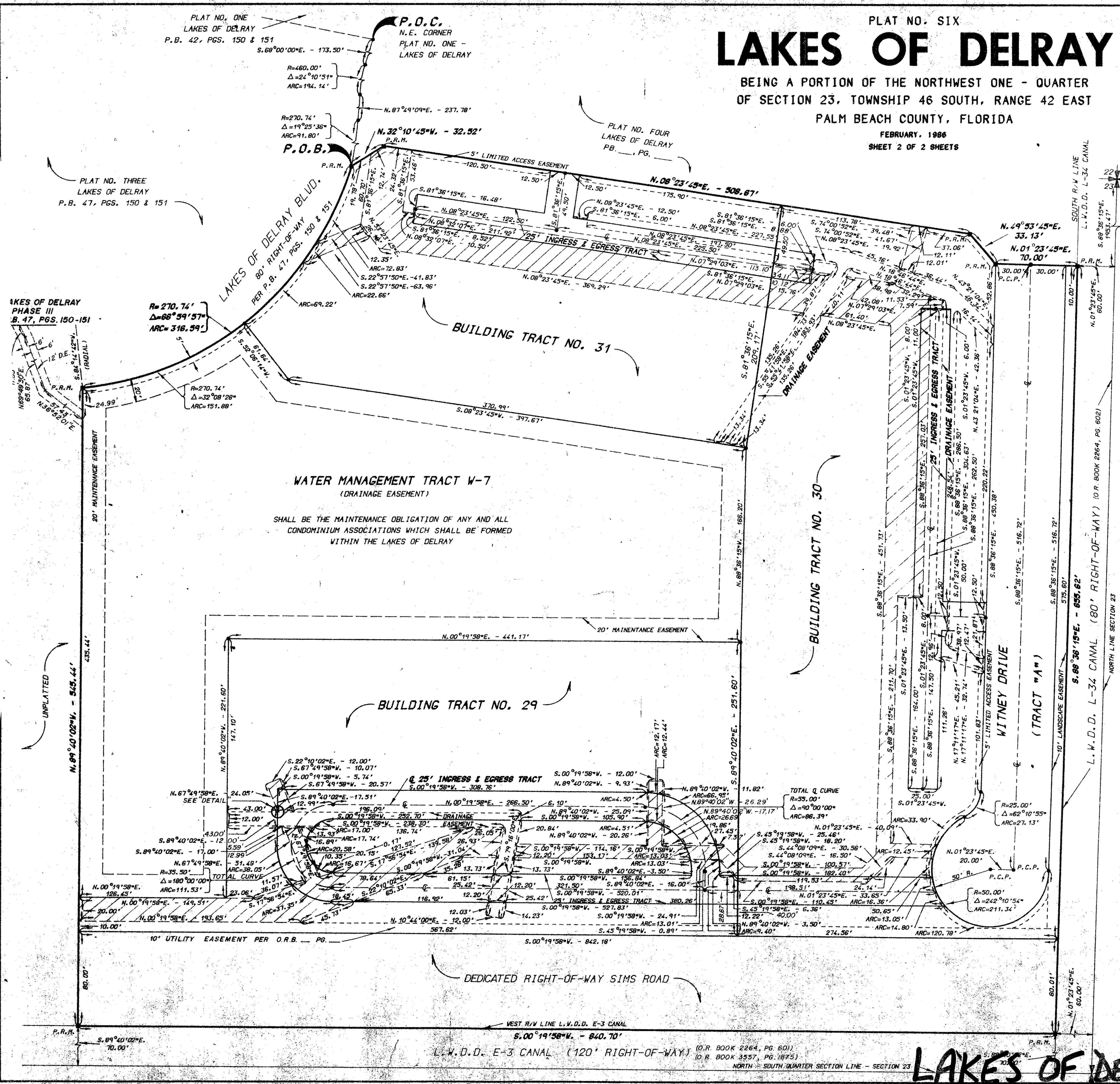


SURVEYOR'S NOTES:

- 1.) ALL P.R.M.'s BEAR THE REGISTRATION NUMBER 3143 SHOWN THUS - ■ P.R.M.
- 2.) PERMANENT CONTROL POINTS SHOWN THUS - ● P.C.P.
- 3.) THE BEARINGS SHOWN HEREON ARE BASED ON A BEARING OF N.00°05'05"E. ON THE WEST LINE OF SEC. 23-46-42 PER THE PLAT OF LAKES OF DELRAY - PLAT NO. ONE AS RECORDED IN PLAT BOOK 42, PGS. 46 AND 47, PUBLIC RECORDS OF PALM BEACH COUNTY, FLORIDA.
- 4.) BUILDING SETBACK LINES SHALL BE AS REQUIRED BY PALM BEACH COUNTY ZONING REGULATIONS.
- 5.) NO BUILDINGS OR ANY KIND OF CONSTRUCTION SHALL BE PLACED ON UTILITY OR DRAINAGE EASEMENTS.
- 6.) THERE SHALL BE NO TREES OR SHRUBS PLACED ON UTILITY EASEMENTS WHICH ARE PROVIDED FOR WATER AND SEWER USE OR UPON DRAINAGE EASEMENTS.
- 7.) LANDSCAPING ON OTHER UTILITY EASEMENTS SHALL BE ALLOWED ONLY AFTER CONSENT OF ALL UTILITY COMPANIES OCCUPYING SAME.
- 8.) ALL DRAINAGE EASEMENTS ARE 12' WIDE UNLESS OTHERWISE DIMENSIONED.
- 9.) ALL INGRESS & EGRESS TRACTS ARE 25' WIDE UNLESS OTHERWISE DIMENSIONED.
- 10.) DENOTES UTILITY EASEMENT.

THIS INSTRUMENT PREPARED BY:
 LEO E. NOBLE P.L.S. 3143 STATE OF FLORIDA
LAWSON, NOBLE & ASSOCIATES INC.
 ENGINEERS - PLANNERS - SURVEYORS
 BOYNTON BEACH, FLORIDA

DETAIL 0267-007
 N.T.S.



LAKES OF DELRAY 55/91